

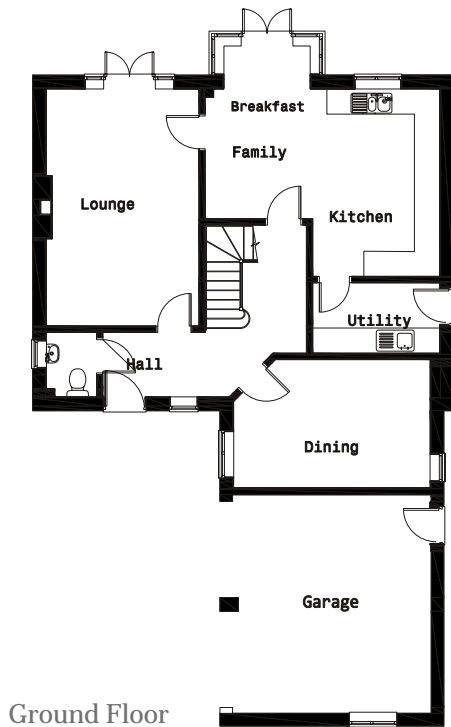
The Corner House

plot 11



• 5 bedrooms • 2 bathrooms, 2 ensembles • 3 floors • Floor area 2782ft²/258m²

Floor layouts & sizes **The Corner House**



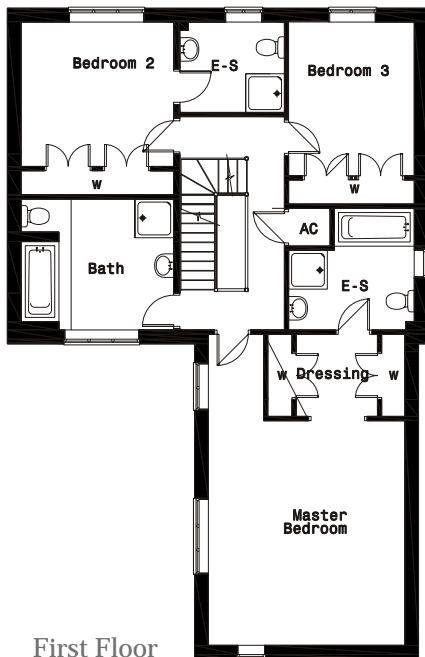
Ground Floor

GROUND	Hallway	4.1 x 4.6m
	Lounge	5.7 x 3.7m
	Kitchen	4.5 x 3.1m
	Family/Breakfast	4.5 x 2.6m
	Dining Room	3.1 x 4.7m
	Utility	1.7 x 3.1m
	Cloakroom	1.6 x 1.3m

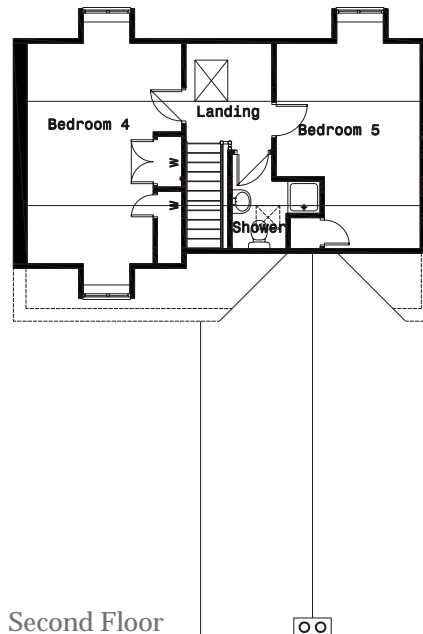
GARAGE

FIRST	Bed 1	5.4 x 4.7m
	Ensuite	2.9 x 3.0m
	Dressing	2.0 x 3.3m
	Bed 2	4.3 x 3.7m
	Ensuite	2.2 x 2.5m
	Bed 3	4.4 x 3.0m
	Bathroom	3.2 x 3.7m

SECOND	Bed 4	4.9 x 3.7m
	Bed 5	4.9 x 3.5m
	Bathroom	2.3 x 2.1m



First Floor



Second Floor



Four Lane Ends, Oakerthorpe, Derbyshire DE55 7LN

01773 520048

www.jmelrosehomes.com

info@jmelrosehomes.com

Important Notice: These particulars are for illustration only. Individual features such as windows, garages and elevational treatments may vary from time to time. Consequently these particulars should be treated as general guidance and cannot be relied upon as accurately describing any of the Specified Matters prescribed by any Order made under the Property Misdescriptions Act 1991. Nor do the contents constitute a contract, part of a contract or a warranty. Total dimension stated are internal floor areas including hallways and garage.